

RHESYMU

3CRh14

Enw cyntaf _____

Cyfenw _____

Ysgol _____

Dosbarth _____

Dyddiad geni ○○ ○○ ○○○○

Dyddiad y prawf ○○ (05) (2014)

Cyfanswm y sgôr (uchafswm 20)

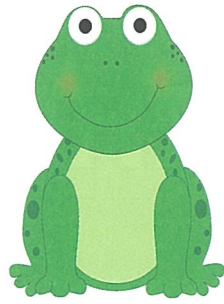


117614



Llywodraeth Cymru
Welsh Government

1



2, 3, 5

Mae Ffion yn neidio ymlaen 2, 3 a 5, mewn unrhyw drefn.

Dangoswch yr holl ffyrdd **gwahanol** y gall Ffion wneud hyn.

Mae un wedi'i wneud i chi.

 Dechrau  1  2  3  4  5  6  7  8  9  10

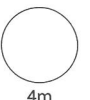
 Dechrau  1  2  3  4  5  6  7  8  9  10

 Dechrau  1  2  3  4  5  6  7  8  9  10

 Dechrau  1  2  3  4  5  6  7  8  9  10

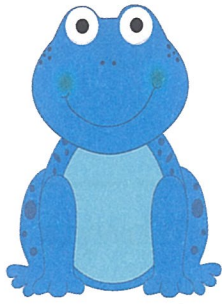
 Dechrau  1  2  3  4  5  6  7  8  9  10

 Dechrau  1  2  3  4  5  6  7  8  9  10



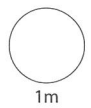
4m

2

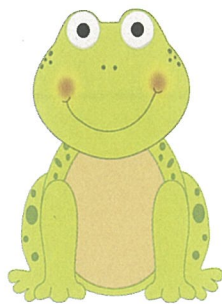


Mae Fred yn neidio ymlaen 3 a 7, mewn unrhyw drefn.

Sawl ffordd **wahanol** y gall Fred neidio i 10?



3

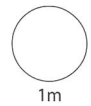


Mae Flo yn neidio i 10 ac mae pob naid o'r **un maint**.

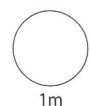
Dangoswch y **gwahanol** ffyrdd y gall Flo wneud hyn.



Dechrau



Dechrau



CYFANSWM



4

Mae Flo, Fred a Ffion yn bwyta corynnod/pryfed cop.



Flo



Fred

Rwy'n bwyta
2 yn fwy
na Flo.



Ffion

Rwy'n bwyta
2 yn fwy
na Fred.

Mae Flo, Fred a Ffion yn bwyta 30 o gorynnod/pryfed cop i gyd.

Faint o gorynnod/pryfed cop mae pob un yn eu bwyta?



Mae Flo yn bwyta

o gorynnod/pryfed cop.

Mae Fred yn bwyta

o gorynnod/pryfed cop.

Mae Ffion yn bwyta

o gorynnod/pryfed cop.

Stopiwch yma

1



7c



3c



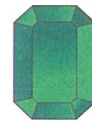
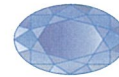
c



9c



c



14c



4c



8c



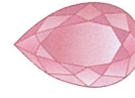
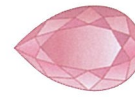
c



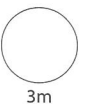
c



7c



10c



3m

2



2c yr un



3c yr un




5c yr un

Mae gan  30c.

Mae'n prynu **pedwar**  a **phedwar** 

Faint o  mae'n gallu eu prynu?




2m

Mae gan  40c.

Mae eisiau cael **nifer gyfartal** o ,  a 

Faint o bob gem mae'n gallu eu prynu?



o bob gem


2m


7m

3 Mae gan y plant chwech o focsys.



Mae pob bocsy yn gallu dal **10** o emau **bach**
neu
mae pob bocsy yn gallu dal **5** o emau **mawr**.

Mae gan  **23** o emau **bach** a **10** o emau **mawr**.

Mae gan  **17** o emau **bach** a **9** o emau **mawr**.

A wnaiff y chwe bocsy ddal eu gemau i **gyd**?

Dangoswch sut rydych chi'n cyfrifo hyn.

