



Ysgol Sarn Bach

Prospectus 2025/2026



Welcome to Ysgol Sarn Bach

Dear Parents,

We welcome you and your child to Ysgol Sarn Bach. While your child is in our care, we will do our utmost to ensure that they will be happy, safe and receives the highest quality of education.

This school is a happy and caring community where every effort is made to promote the children's spiritual and moral growth. Here there is close contact with each family and a policy of responding to problems or difficulties is implemented by discussing them with the parents.

I would like to see all children look back on their childhood as a happy period which has been a solid foundation for their life as they develop into citizens of the future.

Education is a partnership between the school and the parents for the benefit of our children. Our influence and support is invaluable in your child's social and educational development. I would like to see this partnership work well and that the needs of the pupil are our priority and rise above everything else.

Yours sincerely
Mrs Nina Williams

School Details

Status: This school is a County Primary School (Infants/Juniors).
Ysgol Sarn Bach is a Category 3 school.

Category 3 – Welsh-medium School

Welsh is the main language for internal communication in the school. We communicate with parents and carers either in Welsh, in English, or bilingually as needed. This is a school with a strong Welsh ethos, supporting and enabling the learners to use the Welsh language in all social contexts in and outside the school.

In an immersion setting all learners are taught fully in Welsh with English being used at times to ensure understanding during the early immersion period.

From the age of 7 onwards, at least 80% of the learner's school activities (both curricular and extra-curricular) will be in Welsh.

SCHOOL STAFF – 2024/2025

Teaching Staff:

Headteacher / Foundation Phase Teacher - Mrs Nina Williams

KS2 Teachers - Miss Delyth Jones / Mrs Debbie Williams

Higher Level Teaching Assistant: Mrs Annwen Jones

Classroom Assistants: Ms Angelina Else
Ms Ffion Williams

Support Staff:

Clerical Assistant: Mrs Annwen Jones

Cook: Mrs Melanie Williams

Cleaner: Mr Michael Rowlands

SCHOOL GOVERNORS 2024/2025

Community Council: Mr Robert M Jones (Chair)

Local Education Authority: Cllr J. B. Hughes

Parents: Mrs Llinos Owen

Ms Sian Scott

Mr Dylan Llwyd (Vice-chair)

Teachers: Miss Delyth Jones

Support staff Miss A Else

Headteacher: Mrs Nina Williams

Co-opted: Miss Lona Roberts

Mrs Gwenan Gryffudd

Business Representative: Mr Bryn Jones

Clerk: Miss Catrin Jones

Description of the School

There are two classes in the school this year, taught as follows:

Foundation Phase – Mrs Nina Williams

Years 3, 4, 5 and 6 – Miss Delyth Jones / Mrs Debbie Williams

Classroom Arrangements September 2025

	N	0	1	2	3	4	5	6	Total
Foundation Phase Mrs Nina Williams	1	4	1	4					10
Years 3, 4, 5 and 6 Miss Delyth Jones / Mrs Bethan Evans					4	3	3	5	15
									25

Admission Policy

Pupils are admitted to school full-time in the September following their fourth birthday and for two hours per morning when they are three years of age. This is in accordance with the Education Authority's policy.

At the end of year six the children will transfer to Ysgol Botwnnog, if that is your wish. Information will be presented to you in good time about this school and an opportunity will be arranged for the children to spend several days there during their last year at Ysgol Sarn Bach. You as parents are invited to visit the school and meet the school's Headteacher, Ms Catrin Pritchard.

Parents in the school's catchment area are welcome to contact the Headteacher to make arrangements to admit the child to the school. Only by contacting the local education office can a discussion commence on the admission of children from outside the catchment area. During the Summer Term all children who start school in September are invited along with their parents to spend time at the school.

Dates for staff training days

1 September, 2025

2 September, 2025

24 October, 2025

22 June, 2026

20 July, 2026

And one further date to be confirmed

Playtime

The children are allowed to play on the yard or on the field depending on the weather. They stay in the classrooms during rainy playtimes where there will be a variety of activities for them.

Morning playtimes are from 10.45-11.00 and afternoon playtimes from 2.15-2.30.

The Fruit Shop will be open during morning playtimes where the children can receive a piece of fruit which is free to all children, or they can bring their own fruit to eat at playtimes. In order to facilitate the arrangements for ordering fruit, pupils are asked to commit to making use of the fruit shop for a term at a time.

The children receive milk during morning playtimes which is free for all children .

Sweets, chocolate and crisps are not allowed. Each child receives a water bottle and they will be expected to take it home to be washed and filled. We expect to see only water in the bottles.

Closing in an Emergency

In an emergency, e.g. no heating or severe weather, we will have to close the school at short notice when we feel that the children's safety is at risk if they are kept in the school until the end of the afternoon. In these circumstances, we will take the following action:

- A) We will contact children's parents to make arrangements for them to collect their children
- B) Information will be available on Gwynedd Council's website

School Dinners

From 1/9/23 all primary school aged children will receive a free school meal . This is an important step towards achieving the ambition of ensuring that no child goes hungry while at school.

Breakfast Club

There is a Breakfast Club at the school which is held daily and is open to all school children from 8.15 a.m. The cost of attending the club is £1 per day per child if they arrive before 8:25 a.m. , there is no cost if they arrive after 8:25 including breakfast-to be paid through the Schoolcomms system. The price includes breakfast and a drink.



Learning Hours

The learning hours are 22.5 hours per week for full-time pupils and 10 hours for the Nursery children.

Morning sessions are from	9 - 10.45 a.m. 11.00 a.m. - 12.15 p.m.
	9 - 11 a.m. for nursery children
Afternoon sessions are from	1.15 - 2.15 p.m. 2.30 - 3.30 p.m.

Children should arrive punctually at school by 8.50 a.m. They will be registered as being 'late' if they arrive after 9 a.m.

A child is not permitted to leave the school's grounds without permission and unless accompanied by an adult.

Attendance and Absence

The school's attendance target for 2025/2026 is 96% for every pupil. The school is committed to improving their attendance levels and punctuality and I appreciate your cooperation with that by being following the guidelines below:

Reporting a period of absence

Parents should contact the school before 9 am to report any absence, either through email or telephone (please leave a message on the answering machine)

Holidays during term time

We urge that pupils do not take leave of absence during the school term as it affects the pupil's ability to engage with the full curriculum.

Parents should not take pupils on holiday normally during the school term, and parents must apply for leave before booking the holidays (form available from school). Parents and carers have no automatic right to remove their children from school for family holidays. Parents and carers must submit an application for prior leave (at least four weeks for a family holiday).

Each holiday leave application will be considered individually, taking into account various circumstances such as the child's age, the time of year the trip is held, the nature of the trip and parental wishes, the pupil's overall attendance pattern, the child's period in education and their progress.

Schools can agree to leave for family holidays if they believe there are **special** circumstances that warrant it. The school will then return the holiday form indicating whether or not they authorise the holiday.

Illness

If the school is concerned about attendance due to a high number of sick absences the school can request evidence showing that necessary medical treatment is being received. An appointment card, a letter from the doctor or a picture of prescription medication would suffice as medical evidence. Without the necessary evidence, the school may inform the parent that any other future absences would be unauthorised until the necessary medical evidence is provided.

Medical/Dental Appointments

We encourage parents to make medical or general dentist appointments outside of school hours. Where it is not possible, then a letter or medical appointment card should be shown to the school **before** the day of the appointment. Without the evidence, the absence will be unauthorised.

Authorised Absence

Only the Headteacher can authorise any absence in accordance with Welsh Government guidance. Any application for authorised leave must be made in writing to the Headteacher (before agreeing to any arrangements).

Unauthorised Absence

If the school does not accept a reason justifying absence then it will be counted as unauthorised absence, and can result in a fixed penalty notice and a £60 fine (if paid within 28 days) rising to £120 (if paid between 29 and 42 days).

You can go a long way in supporting your children's regular and punctual attendance. Parents should:

- take an active interest in their child's School life and work
 - attend parents' evenings and other school Events
 - ensure their child completes their homework and goes to bed at an appropriate time;
 - be aware of letters coming home from school with their child
 - make sure their child gets to school on time every day
 - ensure that their child only misses school for unavoidable or justifiable reasons, such as illness or days of religious observance
 - ensure that any current contact details are provided to the school to assist contact
 - avoid booking family holidays during term time
 - speak to the school if they are concerned that their child is unwilling to attend
- work with other agencies to support attendance improvement.

We appreciate your support in ensuring that your child receives a continuing education that will ensure

The School's Rules

- School starts promptly at 9 a.m. Any children arriving at school between 8:15 and 8:50 will attend the Breakfast Club.
- School finishes at 3.30 p.m.
- As we participate in the Gwynedd Healthy Schools Scheme, we do not allow sweets, crisps or drinks other than water to be brought to school.
- The school works conscientiously to ensure the children's safety whilst on school premises or in the care of a teacher outside school. They are the responsibility of the parents or guardians once they are outside the school gates at the beginning or end of the day.
- In the event of an accident or sickness during school hours, every effort is made to contact the parents or guardians if needed. In emergencies where contact cannot be made, the Headteacher will take action as required.
- The school is not responsible for any loss or damage caused to the pupils' personal belongings. Toys are not permitted at the school.
- We expect all children to behave politely and helpfully towards individuals within the school. We want to preserve the good name of the school so that members of the public and organisations we visit can continue to show their gratitude and appreciate the children's behaviour.
- We expect all children to respect the school's property and the property of other children.
- If a child needs any medication within school hours, the parent will need to fill in a consent form. The form is available from the Headteacher.
- If your contact details change, we ask you to let the school know immediately.
- The school must be notified if there is any change in the arrangements for collecting the children from school.

Health and Safety

The safety of pupils, staff and visitors is a priority here at Ysgol Sarn Bach. The governors ensure the safety of the school's building and property. Risk assessments have been prepared to ensure that school activities are as safe as possible. Risk assessments are prepared before embarking on any trip or activity outside school boundaries.

Accidents and Medications

School staff will care for and comfort any child who becomes ill or has an accident. Two members of staff at the school have a First Aid qualification so that we can ensure that there are qualified staff on school premises at all times. All staff have received basic first aid training. Any accident will be considered and assessed by the First Aider and the school will then contact the parent to collect the child if necessary.

It is vitally important that the school is informed immediately if your contact details change. A record of each accident will be kept on file and the school staff will call home to explain what happened.

In urgent cases where the parents cannot be contacted, the First Aider will respond and act as required.

Ethos and Behaviour

The school demands positive behaviour from all the school's children. We believe that this is vital in order to deliver the best education and positive life skills to the children. If a child did not comply with the school's rules and expectations we would follow guidelines within the Behaviour Policy. We receive a very positive response from establishments that the children visit regularly as they always behave in a respectful and polite manner with each other and with adults.

Complaints Procedure

The Local Education Authority, in accordance with the requirements of Section 23 of the Education Reform Act 1988, has established a procedure for considering complaints about the way the schools' Governing Bodies and the Education Authority operate in relation to the school curriculum and other related matters.

Most complaints result from misunderstanding or poor communication. If we are determined to resolve a difficulty to the satisfaction of both sides, we believe that a full understanding of the arrangements for making a complaint is needed as well as a positive attitude towards improving the situation.

A parent wishing to complain about the organisation or content of the curriculum should adhere to the following procedure:

(a) Contact the Headteacher. The case will be investigated by the Headteacher (or a member of staff nominated by the Headteacher) and the parent will receive a direct response. (Minor complaints should be discussed with the individual teacher. If a parent is not satisfied with the response, then the Headteacher should be contacted.)

(b) If a parent is not satisfied with the response, they should write to the Chair of the Governing Body. An investigation would be carried out by members of the Governing Body Complaints Committee who would then provide a response.

Contacting the school

Every effort is made to answer phone calls but all the staff are teaching, there is no member in the office all the time. The school does not allow staff to answer the phone during lessons as this disrupts the flow of a lesson so please leave a message on the school's answering machine. We listen to the answering machine messages regularly during the day and we will be sure to get back to you as soon as possible. If you need to get in touch to let the school know about a change to the child's arrangements for going home, leave a message on the answering machine - a member of staff listens to the messages at 3.25 daily in case there are last minute changes to arrangements. You can also get in touch by sending an e-mail to Nina.Williams@sarnbach.ysgoliongwynedd.cymru.

Child Protection

This school is required to follow clear and explicit guidelines from the Safeguarding Children Act. Teachers and ancillary staff have a duty to identify signs of abuse or neglect and to raise their concerns immediately.

The Responsible Persons for Child Protection

Coordinator -

Mrs Nina Williams, Headteacher of Ysgol Sarn Bach,
Contact telephone number - 01758 712714

Member of the Governing Body -

Mrs Gwenan Gruffydd
Contact telephone number - 01758 713534

Member of the Authority -

Ms Bethan Jones , Child Referral Team, Ffordd y Cob, Pwllheli
Contact telephone number - 01758704455

The contact person for the Authority or governors should be contacted if there are child protection allegations that involve the Headteacher.

Arriving at and going home from school

In the morning

The Breakfast Club starts at 8.15 a.m., parents need to escort children to the back door of the hall and leave the child with a member of the Club's staff.

The school doors open at 8.50 a.m. We encourage the children to be independent from a young age, therefore the parents will leave the children at the school gate and the children will come in and put their coat and bags on the peg and go to classes until the bell rings at 9 a.m. Staff are in the classes at 8.50 a.m. waiting for the children. There are no members of staff in the classes before 8.50 a.m. so children are not to arrive early for obvious safety reasons. Some children are insecure during the first year at school and because of this, parents are welcome to accompany their children to the classes. Usually, by the time they come to school full time, they are confident enough to come in by themselves.

End of the day

At the end of the day, the school staff escort the children who travel by school bus first. The rest of the children are only released to their parents when the two school buses have left.

Parents/guardians are asked to come up to the school door and wait for children at the bottom of the slope that leads from the front door of the school. Staff will NOT let children out to parents/guardians who are waiting at the gate or in the road, for safety reasons.

School Uniform

The school has an official school uniform of which it is proud.

We encourage all parents to write their child's name on all clothing and personal belongings. Pupils should wear suitable and comfortable clothes and shoes that are safe to run and play in. No crop tops or unsuitable shorts.

School jumpers are available from the Cloth World shop in Pwllheli. It is not necessary to purchase school clothing with the school logo on them, it could be possible to purchase clothing of the same colour for less money without the logo.

Physical Education Kit

Reception to year 2 receive Physical Education Lessons on Wednesdays and years 3– 6 on Mondays. Children will need clothes and shoes suitable for the physical education lessons and also suitable for the weather.



The School-Home Relationship

At Ysgol Sarn Bach we believe strongly in a happy and healthy relationship between the school and home. We like to think that any parent would feel that they could come to the school to express any concern regarding their children's education or happiness. We look after the most valuable individuals in the world for the parents. Because the Headteacher teaches, you are asked to e-mail the school to make an appointment and we will welcome you for a chat when practicable.

Your child's educational development depends on how effective the collaboration is between the school and the home. It is a two-way process. We expect the parents to spend time reading and helping the children with any homework or extra work organised by the school in order to develop the child further for the benefit of the individual.

Homework

Our Homework Policy notes that the most important thing a child can do at home is to read. We encourage every child to read at home on a daily basis. A record is kept in every classroom of every child's reading activity at home and classes are rewarded for regular reading. In addition to this we have created a "Google Classroom" for each class which contains a variety of activities to support children's basic skills at home. Children can access this classroom from any device. The school has also invested in two online reading programmes, Darllen.co in Welsh and Reading Eggs in English. Children can access these from home as well, log in details are available from class teachers.

Read with Me scheme!

The school tries to encourage parents to read with the children from nursery to year 6. The school will provide a school bag for the children to carry their books neatly and the children are expected to return their books daily but not as often by the time they develop into good readers. We encourage the parents to record in their reading record books.

Communicating Information to Parents

Distribution of letters

We distribute letters to parents mainly by e-mail . It is important to let the school know if your email address changes and to check inboxes regularly Any news or general information is presented through the school's website. The school also has a "facebook" page which is mainly used to distribute information about events. The school has a mobile phone (07442 681599) which to send text messages with a quick note to the parents, or arrangements and times for returning home from trips.

Reporting on your child's development

A parents' meeting will be held at the school during the Autumn Term and end of the Spring Term. Here you have the opportunity to discuss any development and the progress of your child. The children are given targets to work on in order to develop further. A written report will be submitted during the Summer Term on the child's development and progress during the year.

Parents' Association

A very active Parents' Association has been established at Ysgol Sarn Bach and all parents are welcome to work together to reach the common goal of raising money for their children's resources and education, getting to know other parents and discussing educational topics. Secretary will contact you by letter to inform you of when the meetings are held.

As a school, we hope to see all the parents attending these meetings.

Urdd

The school has a tradition of competing in all Urdd activities such as ei-steddfodau, arts and crafts and sports. The Urdd Club is held after school twice every term, children do have to be members of the Urdd in order to attend.

Residential visits

We organise residential trips for pupils from years 3-6 annually.

Healthy School

Ysgol Sarn Bach is part of the Gwynedd Healthy Schools Scheme and is now working on phase 5 of the Plan. The Scheme enables the school to contribute positively towards the Health and Well-being of the pupils, teachers and the wider community by developing an environment which promotes health.

Green School

The school received the bronze award and is now working on gaining the silver award.

School Council

The pupils elect members of the School Council annually. Their job is to ensure that the child's voice is heard and acted upon.

At Ysgol Sarn Bach the pupils have the opportunity to:

- Offer ideas on how to improve their learning environment.
- Give opinions and comments about school life.
- Contribute to making the school a happier place.

The Garden at Ysgol Sarn Bach

We have established a garden on the school grounds and all the children have been busy preparing the land, planting flowers and vegetables and enjoy taking the vegetables home to eat!

Road Safety Officers

The pupils elect Road Safety officers annually and their job will be to raise the pupils' awareness of Safety when using the highway and of the dangers that exist when using the road.

Physical Education

The school provides a stimulating and safe environment for pupils where they can work towards general maturity while developing physical skills. Activities are provided that give the pupils enjoyment while meeting their creative needs. We will learn and provide an opportunity to practise and improve skills relevant to the activity. A course of swimming lessons is organised in the swimming pool at Pwllheli for the whole school throughout the year. It is felt that periods like this are a more successful method of getting the children to swim. The aim is to have every child swimming at least 25m before the end of Year 6.

The school also operates a "Clwb Dal i Fynd" which encourages children to improve and maintain fitness through running.

Information Technology and Internet Safety

The latest developments in education have given Information Technology a high status, along with a clear description of the nature of the subject. Information Technology is characterised by the ability to use equipment and IT information sources effectively to analyse, process and present information and to model, measure and manage external events. At Ysgol Sarn Bach, emphasis is placed on developing IT through Curriculum for Wales subjects, and the computer is seen as a 'cross-curricular tool.' The school updates ICT resources regularly and this includes a wi-fi connection throughout the school.

The school plans carefully in order to make pupils aware of how to be safe on the internet, parents can also play a key role, and there are many resources available on your child's HWB website and also through the NSPCC website, e.g. identifying the signs of radicalisation and cyberbullying among children.

Music

Music lessons which include singing, composing and instrumental work are held every week. The school competes in the Urdd competitions. There is an opportunity for the children from year 2 onwards to have instrumental lessons. Unfortunately a fee has to be charged for the lessons. Children who are entitled to free school meals are also entitled to free music lessons. These lessons are very successful.

Christmas Concerts are held in the hall where every child has the opportunity to appear on stage.

Charging Payment Policy

In general, no fee is charged for educational activities, but the school's policy is to charge fees for activities that take place outside school hours or those that do not form part of the curriculum, such as instrumental lessons. A voluntary contribution is requested towards costs such as educational trips, bus costs to go swimming/to physical education lessons and local trips. Parents are asked to pay for residential visits. No child is excluded from activities on the grounds of a reluctance or inability to make a voluntary contribution.

Relationship and Sexuality Education

Statutory education for all primary aged school children which takes place naturally throughout the whole curriculum and the whole of the school year. Content is appropriate to the age and maturity of the children.

Religion

This school is not directly or formally affiliated to any religious denomination. The religious education presented is based on the Authority's recognised syllabus. A copy of this syllabus can be seen at the school. Arrangements can be made for children whose parents do not wish for them to attend religious services or similar studies.

Equal Opportunities Policy

The aim of the School Policy is to give equal opportunities to all children during their school career regardless of their gender, age, language, race and ability. The policy confirms that the school fosters positive social attitudes, ensures broad experiences and encourages happy and constructive collaboration.

Accessibility Policy

The school has been designated by the Authority as a school that has the resources to admit pupils with disabilities. The school ensures full access to the curriculum for each child. Correspondence from the school is provided in audio or large-print format for parents if required.

Racial Equality

The school plays its part in eradicating racism and attaching value and prestige to diversity.

Language, Literacy and Communication Skills

This area of learning focuses on pupils having diverse language experiences and activities. Emphasis is placed on developing speaking and listening skills for the children which will set a firm foundation for developing reading and writing skills. The pupils refer to their intentions by asking questions, expressing opinions, responding to situations and making choices through various media. They are encouraged to listen to others and respond to them. They have opportunities to choose and use reading material, understand the conventions of print and books, and are given a wide range of opportunities to enjoy mark making and writing.

Mathematical Development

This area of learning focuses on children developing their skills, knowledge and understanding of mathematics by solving problems. They use numbers in their daily activities and develop a range of flexible methods to progress in their mental maths in order to solve problems in a variety of contexts, moving forward to use developmental approaches. They investigate shape and measurement, sort, match, sequence and compare objects and create patterns.

Creative Development

This area of learning focuses on children developing their imagination and creativity through the curriculum. Their natural curiosity and disposition to learn is stimulated by everyday sensory experiences. Children engage in creative, imaginative and expressive activities in art, craft, design, music, dance and movement.

The Hidden Curriculum

Apart from the individual expertise of the teaching staff, this is the factor that is mainly responsible for giving each school its singular and unique character. This is the part of the curriculum that cannot be placed under headings - the philosophy that lies behind the learning and staff's motivation, together with the way in which the school's policies have regard for the nature of the society that it serves - this is what gives the school its unique character.

At Ysgol Sarn Bach we strive to offer a wide variety of experiences in order to stimulate the different needs of each child. We realise that pupils are all different from each other and that they are entitled to succeed in different ways. Not everyone succeeds academically and therefore we see the importance in giving a variety of experiences in order to show and develop their talents outside the walls of the classroom. We guide the children to be able to solve problems creatively and use their skills in developing into future citizens.

Enterprise

The school encourages the pupils to take part in entrepreneurial activities. The pupils gain experiences of advertising, pricing goods, selling and calculating the profit. We take advantage of every opportunity to get members of local businesses to work together with the school in order to give the pupils real experiences of the business world. They use profits from one venture to develop another.

Provision for Pupils with Additional Learning Needs (ALN)

Principles

As a school, we aim to operate in accordance with the principles below that have been adopted by the Gwynedd Education Committee.

- To ensure equal curricular and social opportunities for children who have additional learning needs.
- To collaborate effectively with other relevant statutory agencies in relation to the field, such as the Health Authority and Social Services.
- To establish a partnership with parents and the Voluntary Bodies that represent them.
- To ensure a response from the Education Authority as a whole and school as a whole to additional learning needs instead of confining the responsibility to specific staff.

Objectives

Our aim at Ysgol Sarn Bach is to do our best to ensure educational and social fairness for each child across the ability range. We also hope to ensure that all individuals have the best opportunity to work to their optimum ability by means of written or practical work in a bilingual context. We also hope to get all children to realise their full potential and unique talents.

We aim to:

- Ensure that the school has a system in place for the early identification of a child who has difficulties that could be hindering their education.
- Collate information from teachers and others to ensure the best understanding of the nature of the child's difficulties.
- Ensure that the necessary provision is made for any pupil who has special educational needs.
- Seek the cooperation and support of parents and others in relation to identifying and providing a service.

Additional Learning Needs

ALN support operates on three levels:

School Action - An expression of concern by the teacher. Contact the parents to discuss. Put the child on the ALN Register. The situation will be reviewed within a term. The child will receive additional support from the school.

School Action Plus - If the child's needs are more intense, experts such as an Educational Psychologist, Language Therapist, Behaviour Support Teacher are called in to offer support to the school and draw up a specialised Individual Work Programme for the child to be implemented in the school.

Authority Individual Development Plan - The Local Education Authority will be required to provide support and financial assistance to the school to meet the child's needs, e.g. placing the child in a special unit, paying for support within the class, etc.

The Special Educational Needs Policy of Ysgol Sarn Bach

(available in the Headteacher's office)

ALN is an essential part of every School Development Plan.

Every ALN Policy is drawn up by all staff and governors.

It is reviewed and monitored at least once a year.

Defining Progress

- Closing the attainment gap between the pupil and their peers
- Preventing the attainment gap from widening
- Ensuring that they are able to participate in the whole curriculum
- Showing improvement in self-help, social or personal skills
- Showing improvements in the pupil's behaviour
- Likely to lead to opportunities for participation in further education, training and/or work.

In order to monitor the appropriateness of removing a child from the school's ALN list, the child will be given a Glannau Menai reading test in Welsh and English (if it is appropriate to do so).

Suggestions for parents to follow in preparation for Ysgol Sarn Bach

- It would help the child if parents talk about and discuss visits, and chat with them on a regular basis.
- Parents are encouraged to read to the children on a daily basis and to play with them, and to have a discussion about the world around them.
- There is no need to do formal work, only to aid the child's awareness of number by teaching them simple rhymes.
- Make use of the local Nursery group to prepare your child socially and linguistically for Welsh-medium education.
- Help your child accomplish tasks such as getting dressed, tying shoelaces, going to the toilet (the child needs to be out of nappies before starting school), using a knife and fork and tidying up.
- Develop activities that encourage conversation and self-confidence.
- Help your child become familiar with the shape of their name.
- Do not use capitals, e.g. Sioned not SIONED.

We look after the most important 'gem' in parents' lives and by working together we aim to do that as effectively as possible.

If you have any concerns about your child's education, please contact me immediately.

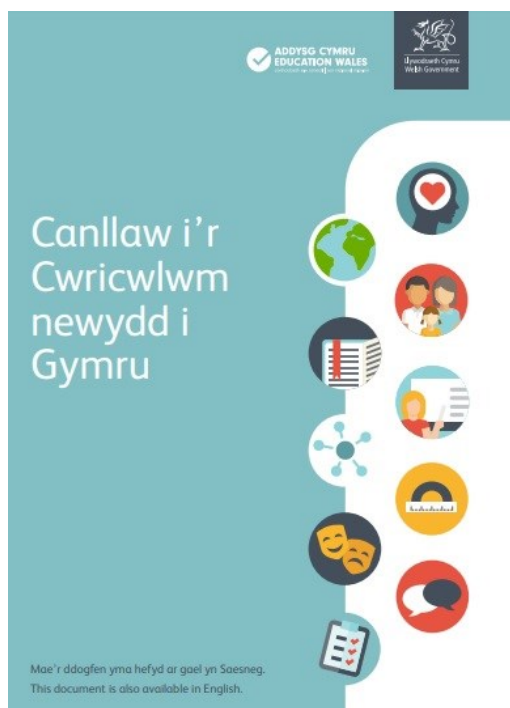
Mrs Nina Williams - Headteacher

Curriculum for Wales

A new Curriculum becomes statutory for all schools in Wales in September 2022.

The school has been preparing for the new curriculum for some time and has been following a specific training programme for its advent. See the Guide below for more information.

As part of these preparations, the school has prepared its own Curriculum Model. This model is available on our website and outlines every aspect of the new curriculum at Ysgol Sarn Bach.



Mae addysg yn newid



Mae'r byd yn newid ac mae angen syniadau newydd a defnydd creadigol o dechnoleg.

Er mwyn mynd i'r afael â'r heriau hyn, mae Llywodraeth Cymru eisio gweud yn siŵr bod gan eich plentyn y wybodaeth, y sgiliau a'r profiadau y bydd eu hangen amyn nhw i wneud y gorau o fywyd.

Mae athrawon ac arbenigwyr addysg o bob cwr o Gymru wedi bod yn cydweithio i ddatblygu Cwricwlwm i Gymru.

Yn ysgol eich plentyn, mae cwricwlwm yn cael ei gynllunio gan athrawon. Maen nhw'n defnyddio'r canllawiau y mae athrawon eraill wedi'u ysgrifennu i'w helpu i gynllunio'r hyn y mae plant yn ei ddysgu.

Mae'r cwricwlwm newydd wedi'i gynllunio i gynnwys pob plentyn. Bydd yn helpu plant gyda gwrsi creadigol yn cysylltu â bywyd go iawn. Bydd yn addas ar gyfer eu hangenion ac yn eu helpu i gyrraedd eu llawn botensial.

Mae'r byd yn fwy cysylltiedig y dyddiau hyn, felly mae'r hyn maen nhw'n ei ddysgu yn fwy cysylltiedig hefyd. Mae gwybodaeth yn bwysig iawn, a byddan nhw hefyd yn cael y sgiliau a'r profiadau sydd eu hangen arny'n nhw ar gyfer **byd sy'n newid yn gyflym.**

Bydd eich ysgol yn helpu eich plentyn i fod yn:

- ddysgwyr uchelgeisiol, galluog, sy'n barod i ddysgu drwy gydol eu hoes
- cyfrannwyr mentrus, creadigol, sy'n barod i chwarae rhan lawn mewn bywyd a gwaith
- dinesydd egwyddorol, gwybodus, sy'n barod i chwarae rhan yng Nghymru a'r byd, ac
- unigolyn iach, hyderus, sy'n barod i fyw bywyd bywyd cyflawn fel aelod gwerthfawr o gymdeithas
- Gelwir rhain yn 'bedwar diben' y cwricwlwm.



Meysydd dysgu a phrofiad

Yn ogystal â sgiliau llythrennedd, rhifedd a digidol, mae **chwe maes dysgu a phrofiad**. Bydd popeth mae eich plentyn yn ei ddysgu yn gysylltiedig â'r meysydd hyn.



Mae'r cwricwlwm hefyd yn ymdrin â:

- hawliau dynol
- amrywiaeth a pharchu gwahaniaethau
- profiadau a sgiliau ar gyfer gyrfaedd a'r gweithle
- dysgu am gyd-destunau lleol, cenedlaethol a rhyngwladol
- addysg cydberthnasoedd a rhywioldeb sy'n briodol o ran datblygiad y plentyn.

3

Meysydd dysgu a phrofiad



Yn y **Celfyddydau Mynegiannol**, bydd eich plentyn yn archwilio celf, dawns, drama, ffilm, cyfryngau digidol a cherddoriaeth i ddatblygu ei sgiliau creadigol, artistig a pherfformio.



Yn y **Dyniaethau** bydd yn dysgu am y byd, cymdeithas a digwyddiadau yn y gorffennol a'r presennol. Bydd yn archwilio'r heriau a'r cyfleoedd sy'n ein hwynebu, a pha gamau egwyddorol y gallwn eu cymryd i ddiogelu'r byd a'i bobl yn y dyfodol.



Yn **Mathemateg a Rhifedd**, bydd eich plentyn yn datblygu dealltwriaeth o rifau ac yn defnyddio symbolau mewn mathemateg. Bydd yn archwilio siapiau a mesuriadau ac yn dysgu am ystadegau a thebygolrwydd.



Mae **Iechyd a Lles** yn ymwneud â gofalu am iechyd corfforol a meddyliol gan gynnwys lles emosiynol. Bydd yn dysgu am fwyta'n iach a sut i wneud penderfyniadau da, delio â dylanwadau a datblygu cydberthnasoedd iach.



Yn **Ieithoedd, Llythrennedd a Chyfathrebu**, bydd eich plentyn yn dysgu am ieithoedd. Bydd yn deall ac yn defnyddio Cymraeg, Saesneg ac ieithoedd eraill. Bydd yn astudio ac yn creu llenyddiaeth, ac yn cyfathrebu mewn ffyrdd llafar, ysgrifenedig neu weledol. Gallai hyn gynnwys barddoniaeth, drama a ffilm.



Yn **Gwyddoniaeth a Thechnoleg** bydd eich plentyn yn dysgu am bioleg, cemeg, ffiseg, cyfrifiadureg a dylunio a thechnoleg. Bydd yn dysgu am ddylunio a pheirianteg, pethau byw, mater, grymoedd ac egni, a sut mae cyfrifiaduron yn gweithio.

Yr Hyn Sy'n Bwysig



Dylai'r hyn mae plant yn ei ddysgu ganolbwyntio ar bethau sy'n bwysig iddyn nhw nawr a phethau fydd yn bwysig iddyn nhw pan fyddan nhw'n tyfu i fyny.

Mae pob maes dysgu a phrofiad yn cynnwys **datganiadau o'r hyn sy'n bwysig** sy'n llywio dysgu plant o bob oed. Mae'r rhain yn helpu eich plentyn i feddwl am yr hyn y mae'n ei ddysgu a sut mae pynciau'n cysylltu gyda'i gilydd, gyda gwaith a chyda bywyd. Maen nhw hefyd yn helpu plant i wneud cynnydd bob blwyddyn wrth iddyn nhw feithrin eu sgiliau a dealltwriaeth.

Mae mwy o gyfleoedd i'ch plentyn ddysgu sgiliau pwysig am oes a fydd yn ei helpu i:

- werthfawrogi'r byd o'i gwmpas/chwmpas
- gofyn cwestiynau, edrych ar dystiolaeth, gwneud penderfyniadau a datrys problemau
- archwilio, cyfathrebu, creu cynlluniau a dod o hyd i atebion
- adeiladu gwydnwch a rheoli ei les/lles
- gweithio gydag eraill a
- gwneud penderfyniadau am yrfa yn y dyfodol yn seiliedig ar brofiadau ystyron mewn dysgu, gwaith ac entrepreneuriaeth.

Esiaml o sut mae hyn yn gweithio

Ym maes dysgu a phrofiad Gwyddoniaeth a Thechnoleg, un o'r datganiadau o'r hyn sy'n bwysig yw:

'Mae'r byd o'n cwmpas yn llawn o bethau byw sy'n dibynnu ar ei gilydd i oroesi.'

Wrth i'ch plentyn ddysgu, bydd yn meddwl am hyn mewn gwahanol ffyrdd, fel hyn:

- Rwy'n gwybod bod 'na anifeiliaid mewn perygl.
- Rwy'n deall bod yr hyn rwy'n ei wneud yn effeithio ar yr amgylchedd, pobl ac anifeiliaid.
- Gallaf adnabod ffyrdd o leihau effaith newid hinsawdd ar yr amgylchedd, bodau dynol ac anifeiliaid.

Dysgu mewn ffordd sy'n gweithio i'ch plentyn

Mae'r cwricwlwm newydd yn datblygu gwybodaeth, sgiliau a phrofiadau eich plentyn.

Bydd yn symud ymlaen pan fydd:

- yn dysgu mwy
- dealltwriaeth o bethau yn dyfnhau
- ei sgiliau cyfathrebu'n tyfu a
- ei sgiliau'n wella.

Efallai y bydd adegau pan fydd yn:

- symud ymlaen yn gyflym neu'n
- arafu i sicrhau dealltwriaeth o bwnc neu wrth ddarganfod rhywbeth sydd o ddiddordeb personol.

Nid yw dysgu bob amser yn gysylltiedig ag oedran. Ni fydd yn digwydd yn yr un ffordd, nac ar yr un pryd i bawb.

Asesu

Bydd asesu yn rhan o ddysgu eich plentyn bob dydd.

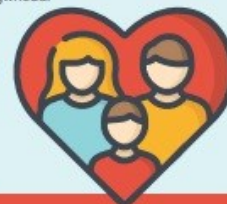
Bydd plant yn gweithio gyda'u hathrawon i ddeall pa mor dda maen nhw'n gwneud. Mae hyn yn bwysig i'w helpu i:

- weld ble maen nhw arni yn eu dysgu
- cynllunio eu camau dysgu nesaf
- sylwi ar unrhyw broblemau neu gymorth ychwanegol sydd ei angen



ac i helpu'r athro i:

- ddod o hyd i ffyrdd i'w herio a
- gweld pa mor dda mae disgyblion yn gwneud.



Bydd yr ysgol hefyd yn gweithio gyda chi i wneud yn siŵr bod eich plentyn yn cael yr help sydd ei angen i symud ymlaen.

Cymwys ar gyfer y dyfodol

Bydd y cymwysterau mae eich plentyn yn eu hastudio o 14-16 oed yn cyd-fynd â'r cwricwlwm newydd.

Yn y dyfodol, yn ogystal â'r cymwysterau sydd gennym ni nawr, efallai y bydd pynciau eraill fel Byd Gwaith, Gallu

Ariannol, Datblygu Gyrfa, Cydraddoldeb ac Amrywiaeth a Chymorth Cyntaf.

Bydd gwahanol fathau o asesu hefyd, er enghraifft, gellir defnyddio technoleg ddigidol.

Paratoi

Mae'r cwricwlwm newydd yn dechrau o fis **Medi 2022** a bydd yn cael ei ddefnyddio ar gyfer pob disgybl ysgol uwchradd erbyn y flwyddyn academaidd **2026/27**.



Mae cyfleoedd i chi, eich plentyn a'r gymuned helpu i ddatblygu cwricwlwm eich ysgol.

Bydd cydweithio rhwng pawb, yn yr ysgol a gartref, yn helpu'ch plentyn i gael yr addysg orau a'u paratoi ar gyfer y dyfodol.

I ddysgu mwy am y cwricwlwm newydd, gofynnwch i athrawon eich plentyn.



Mae fideo Iaith Arwyddion Prydain (BSL) i blant, pobl ifanc a theuluoedd am y Cwricwlwm i Gymru a BSL yn y cwricwlwm ar gael ar sianel YouTube Addysg Cymru.

Am ragor o wybodaeth



@LIC_Addysg
addysgcymru



@dechraucartref
dechraucartref